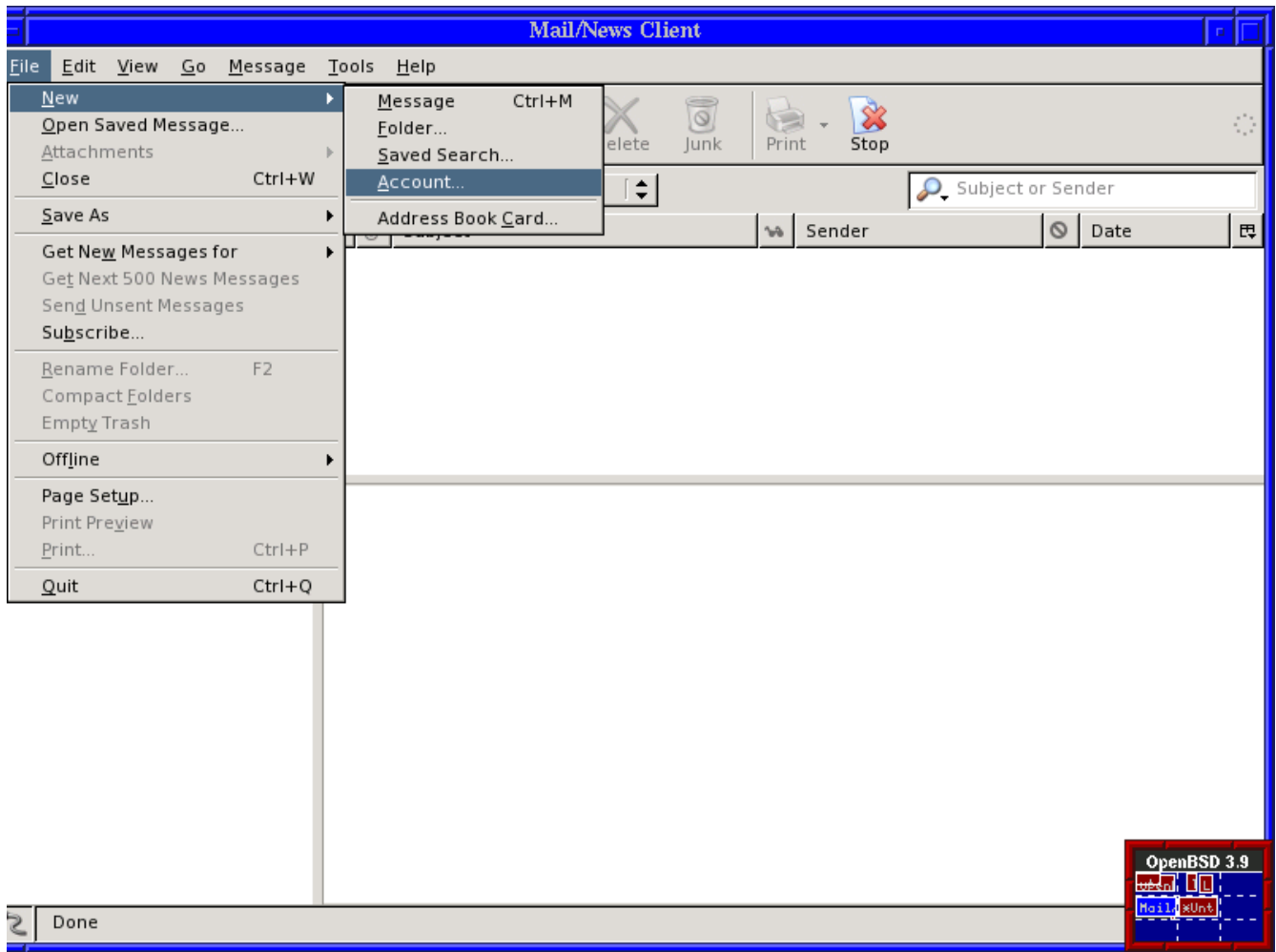


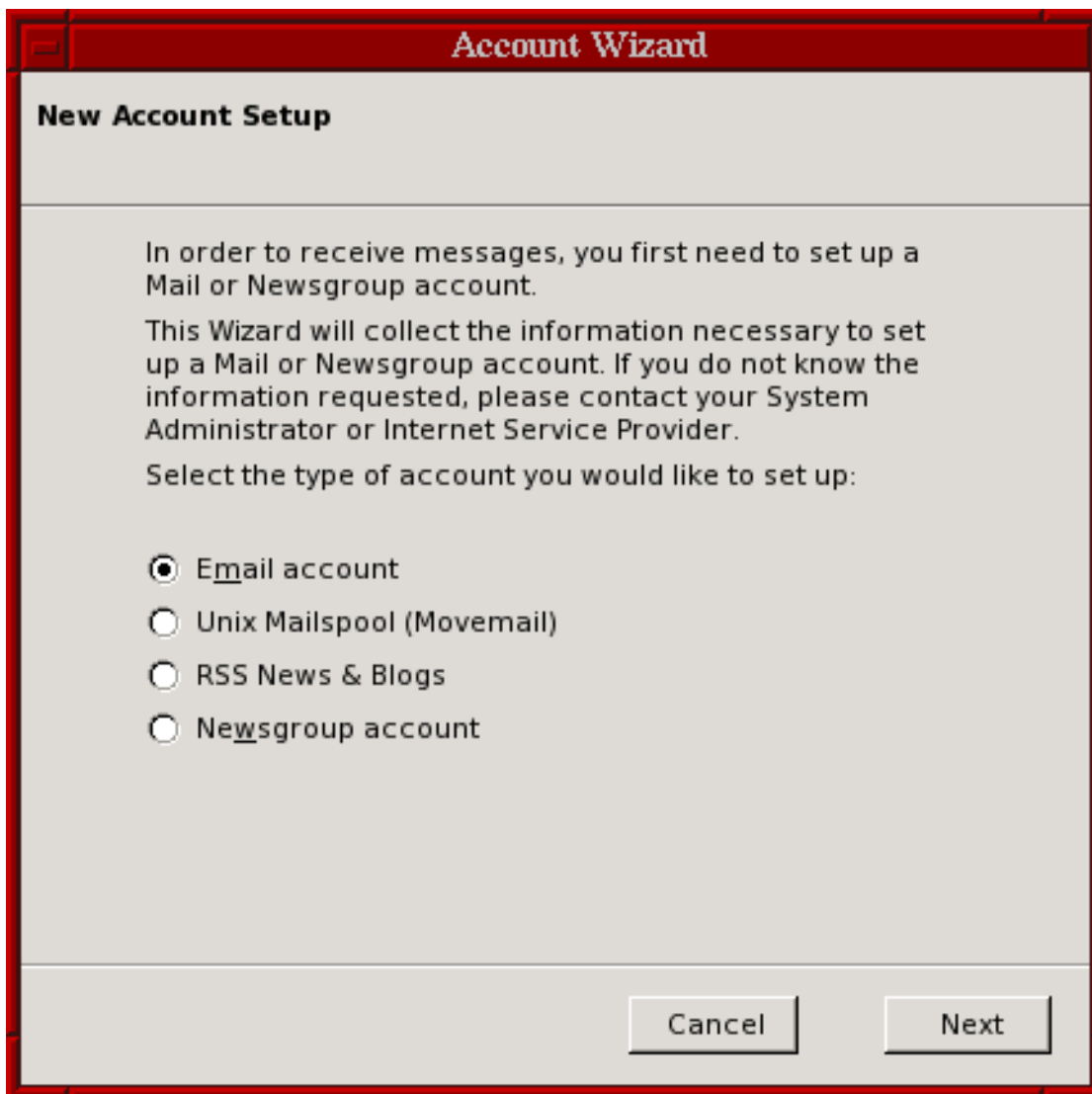
# Configuration of Mozilla-Thunderbird 1.5 to use llorien.org mailservers

First, go to File -> New -> Account.

Note that on first time run, by default, thunderbird goes there



This screen will be popped out. Select “Email Account” and then click on “Next”.



Here, enter your name in the “Your Name” field. This is the friendly name you want to be displayed on outgoing messages. Enter also your email address, this is the one that was given to you with your account. Then click on “Next”.

**Account Wizard**

**Identity**

Each account has an identity, which is the information that identifies you to others when they receive your messages.

Enter the name you would like to appear in the "From" field of your outgoing messages (for example, "John Smith").

Your Name:

Enter your email address. This is the address others will use to send email to you (for example, "user@example.net").

Email Address:

Here, just fill “mail.llorien.org” in both fields and select “IMAP” as the server type. Then click on “Next”.



The image shows a screenshot of a software dialog box titled "Account Wizard". The dialog has a red title bar and a grey background. At the top, the title "Account Wizard" is centered. Below the title bar, the section "Server Information" is displayed. The main content area contains the following elements:

- A prompt: "Select the type of incoming server you are using."
- Two radio buttons: "POP" (unselected) and "IMAP" (selected).
- A prompt: "Enter the name of your incoming server (for example, 'mail.example.net')." followed by a text input field containing "mail.llorien.org".
- A prompt: "Enter the name of your outgoing server (SMTP) (for example, 'smtp.example.net')." followed by a text input field containing "mail.llorien.org".
- At the bottom, three buttons: "Cancel", "Back", and "Next".

Here, enter your login name in the field. This login is not your email address, but the login account that was given to you. Then, click on “Next”.



The image shows a dialog box titled "Account Wizard" with a red border. The title bar contains a close button on the left and the text "Account Wizard" in the center. Below the title bar, the dialog has a header section with the text "User Names". The main area contains the following text: "Enter the incoming user name given to you by your email provider (for example, "jsmith")." Below this is a label "Incoming User Name:" followed by a text input field containing the text "yourloginhere". Further down, there is a paragraph: "Your outgoing (SMTP) server, "mail.llorien.org", is identical to your incoming server, your incoming user name will be used to access it. You can modify outgoing server settings by choosing Account Settings from the Tools menu." At the bottom of the dialog, there are three buttons: "Cancel", "Back", and "Next".

**Account Wizard**

**User Names**

Enter the incoming user name given to you by your email provider (for example, "jsmith").

Incoming User Name:

Your outgoing (SMTP) server, "mail.llorien.org", is identical to your incoming server, your incoming user name will be used to access it. You can modify outgoing server settings by choosing Account Settings from the Tools menu.

Cancel Back Next

Here, you can enter a friendly name for your account. This has no other purpose than to display a name you recognize in the left pane of thunderbird. Default setting is generally fine. Click on "Next" when finished.

**Account Wizard**

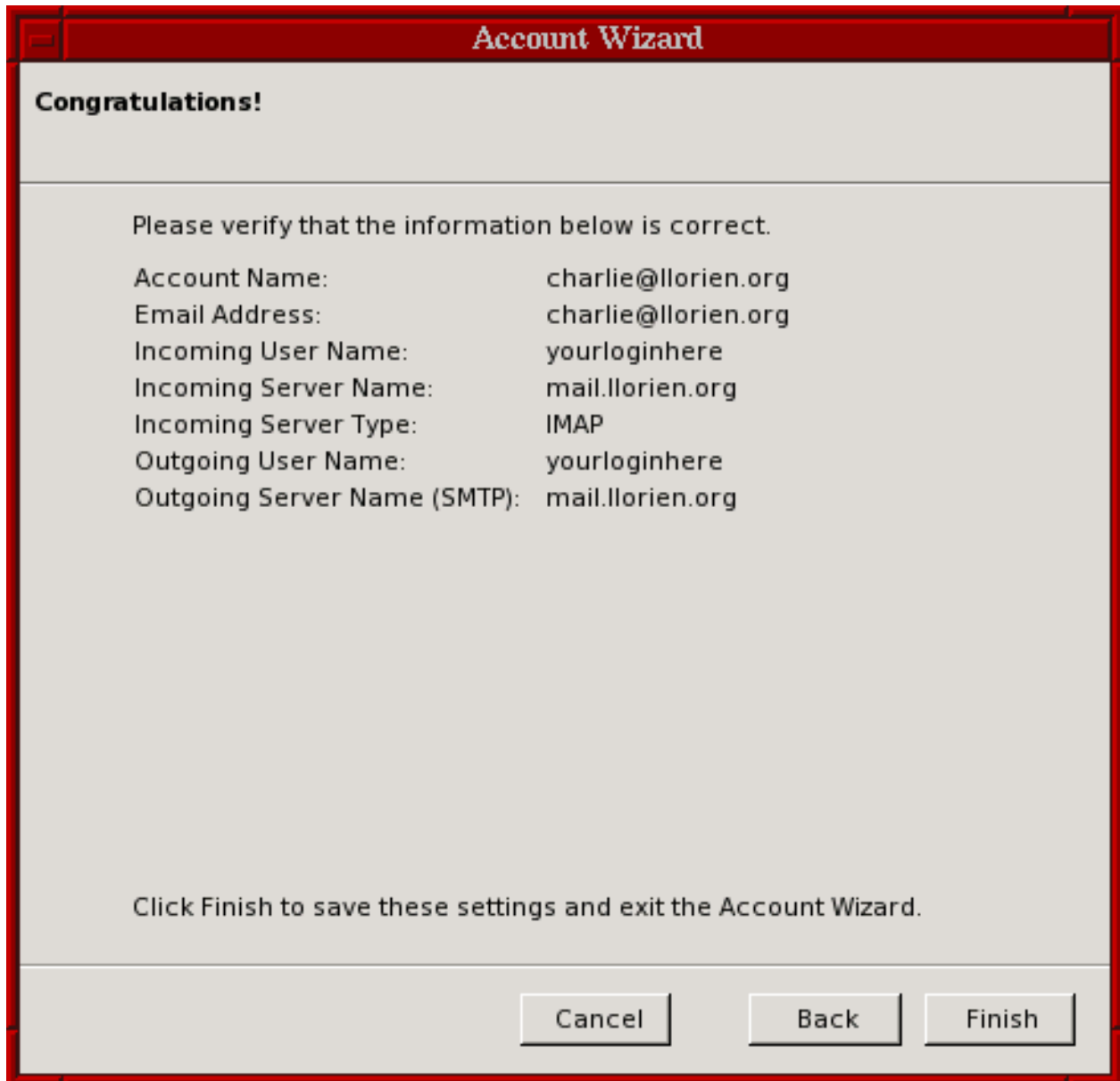
**Account Name**

Enter the name by which you would like to refer to this account (for example, "Work Account", "Home Account" or "News Account").

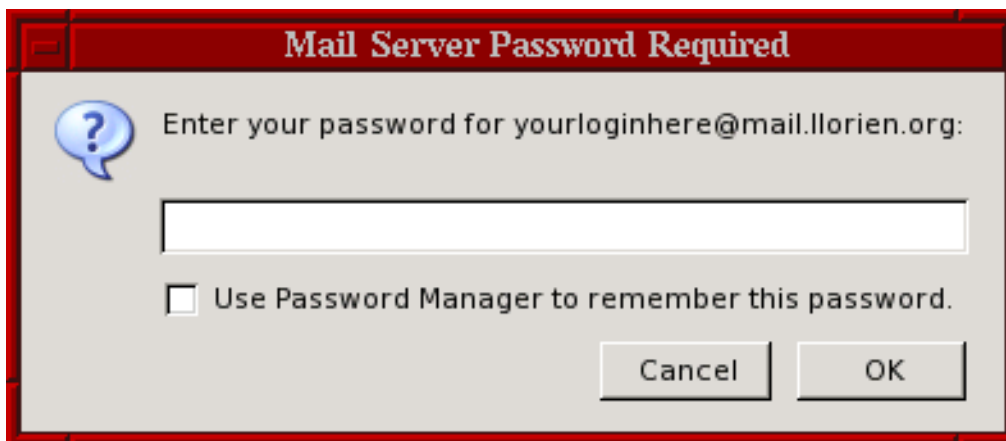
Account Name:

Cancel Back Next

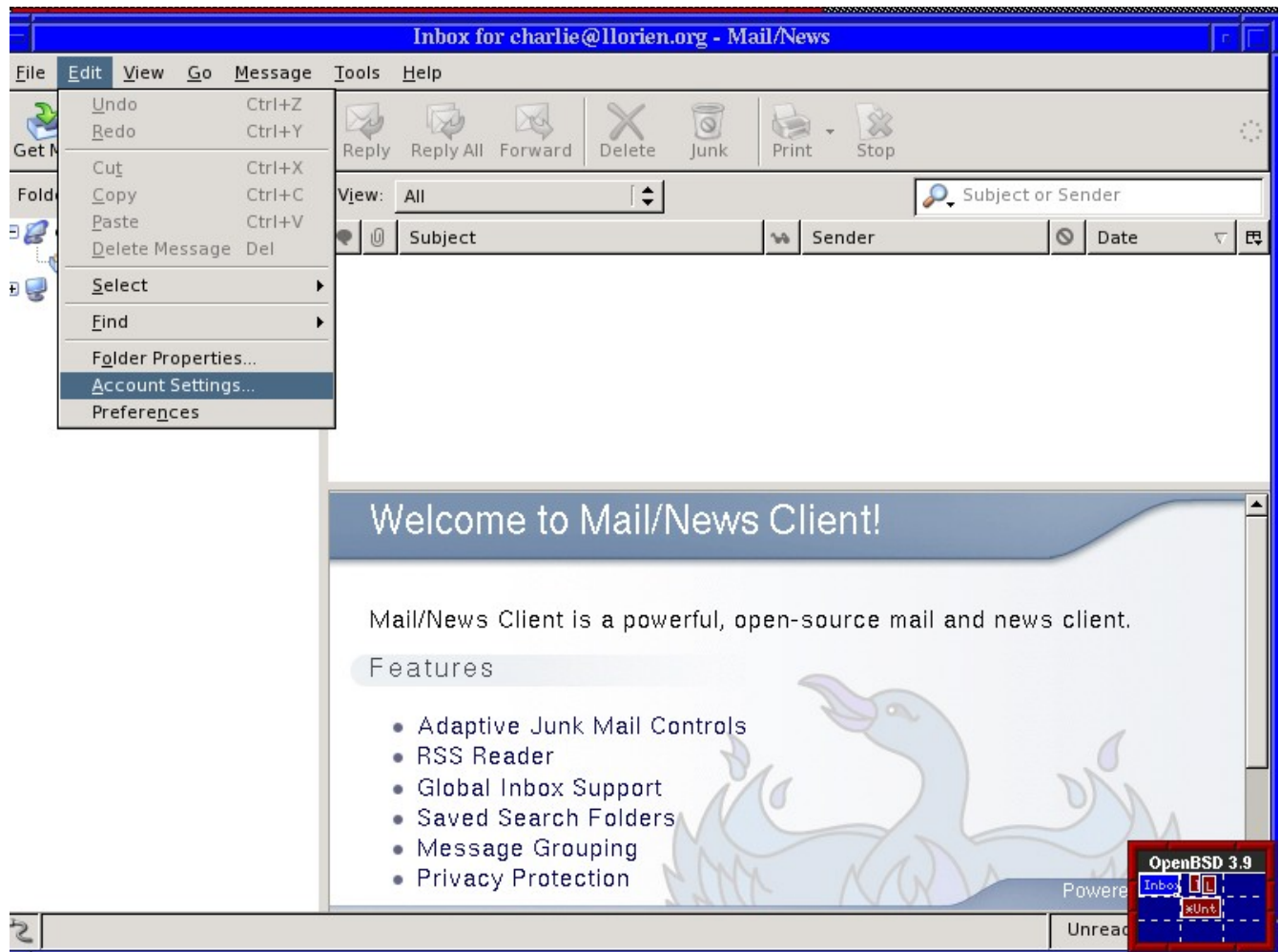
Here is a summary of all your configuration. They should be fine, so let's click on "Finish".



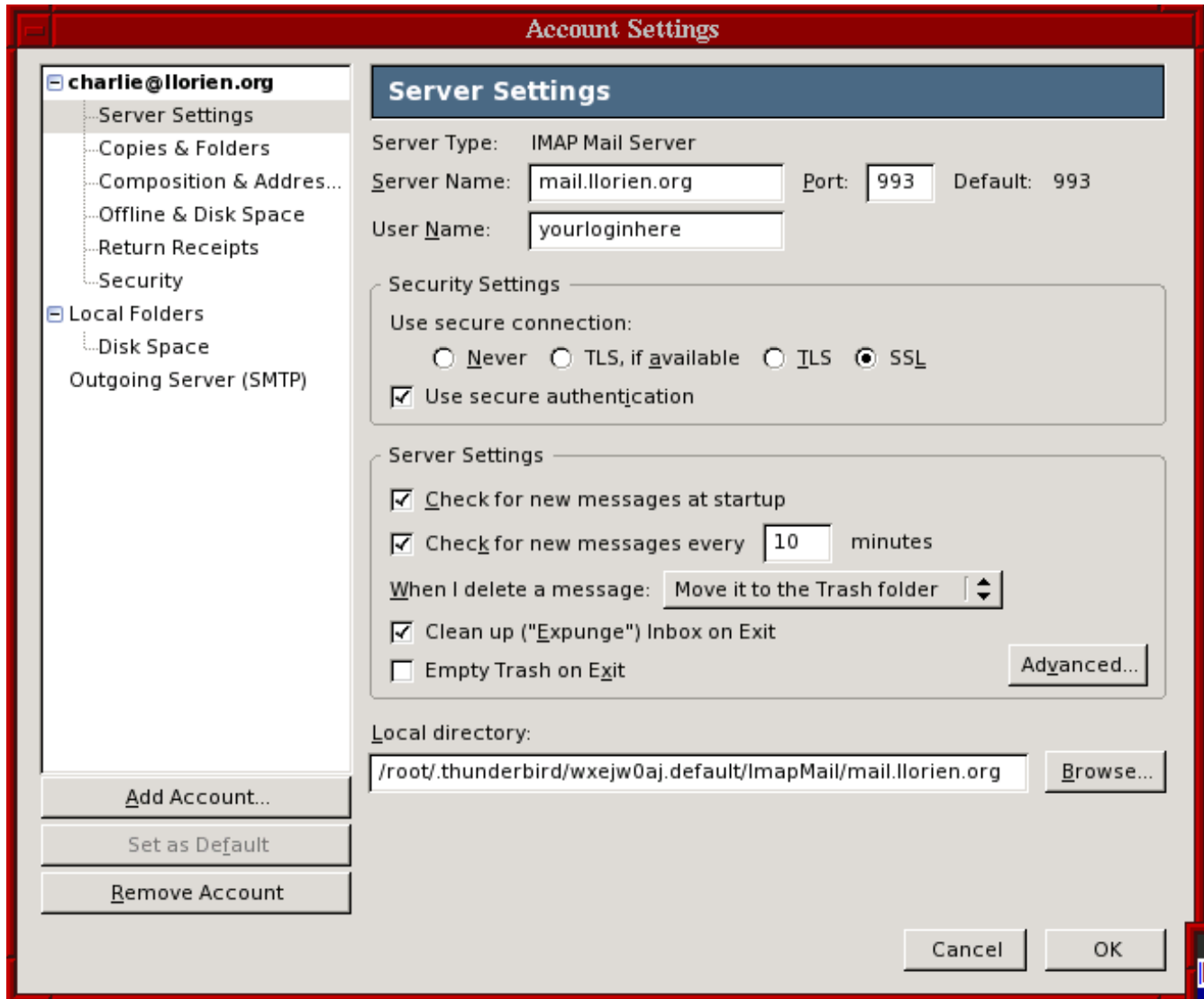
A popup will ask you for your password. Do not enter it right now, just click on “Cancel”, as we want to define some security before.



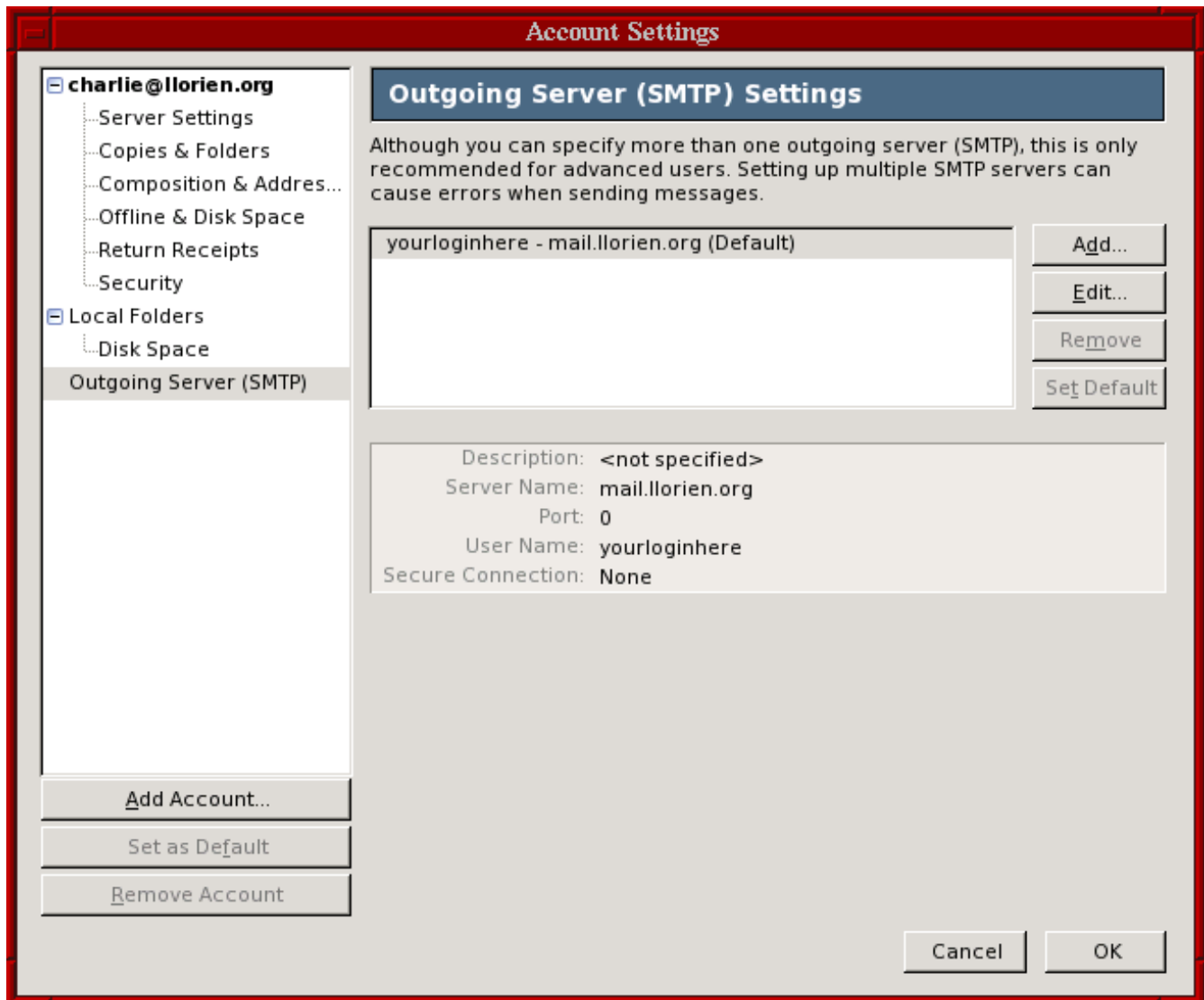
We will now edit the security settings for maximum security. So go to the “Edit” tab and select “Account Settings”



Here, select the “Server Settings” tab. You now have to select “SSL” (“Port” on the top will automatically switch to 993). Also select “Use secure authentication”. And it's recommended to also check “Clean up ('expunge') Inbox on Exit. If you don't do this, your deleted mails will still stay in your inbox with a deleted flag. You can also configure the interval between mail checkouts.



Go to “Outgoing Server (SMTP)”, select mail.llorien.org if it isn't already done, and click on “Edit”.



Here, just select “SSL” on the bottom. “Port” will switch to 465 automatically. Then click on “OK”.

**SMTP Server**

**Settings**

Description:

Server Name:

Port:  Default: 465

**Security and Authentication**

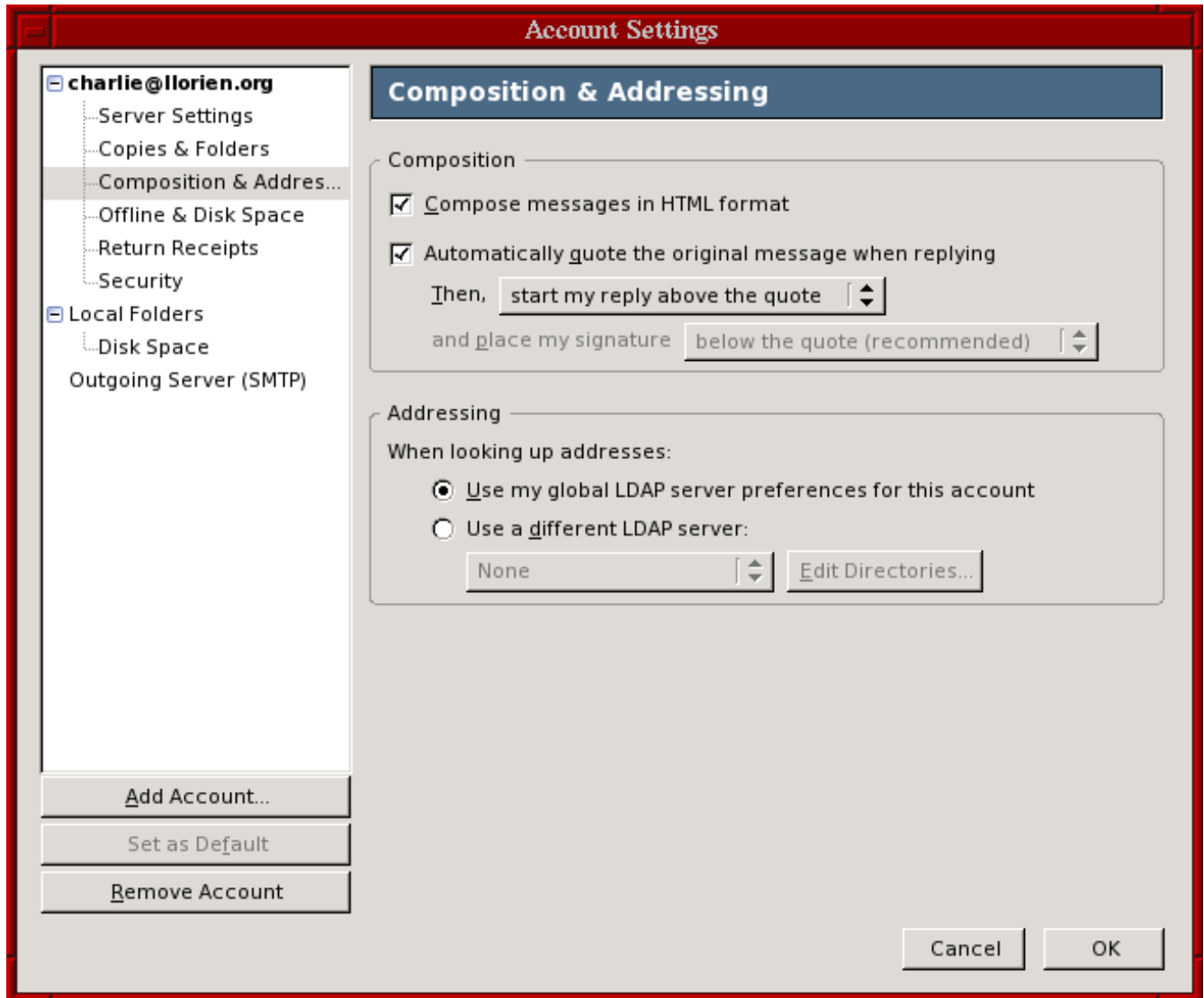
Use name and password

User Name:

Use secure connection:

No  TLS, if available  TLS  SSL

This last step is not mandatory, but if you don't do it, you may have some people frustrated by the place your replies are made in the messages. So select the "Composition & Addressing" tab. And change the first menu to "start my reply above the quote". Click "OK" and you are done.



You can now use Thunderbird to read your mails. Popups will appear to ask you your password, just enter it. If you wish the program to automatically log you without having to enter your password every time, just check "Use password manager to remember this password".

Have a good time using mail.llorien.org services on Mozilla-Thunderbird.